

Watch Cardboard Rigid Packaging Box Square Shape Multipurpose

Our Product Introduction

for more products please visit us on fancypackagingboxes.com

Basic Information

- Place of Origin: Guangdong, China
- Brand Name: oem
- Model Number: 164315
- Minimum Order Quantity: 500 pieces
- Price: \$0.65/pieces 500-999 pieces
- Packaging Details: About 10 kg (or Less than 12 kg) per AA Carton
Or According to client
- Supply Ability: 500000 Piece/Pieces per Month

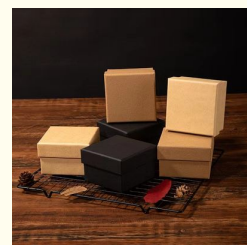
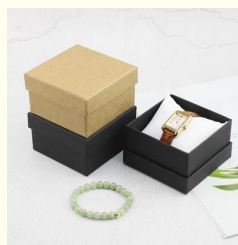


Product Specification

- Industrial Use: Jewelry & Watch & Eyewear
- Use: Watch
- Paper Type: Kraft Paper
- Printing Handling: Matt Lamination, Varnishing, Stamping, Embossing, Glossy Lamination, UV Coating
- Custom Order: Accept
- Feature: Handmade
- Shape: Square
- Box Type: Rigid Boxes
- Logo: Accept Customized Logo
- Material: Kraft Paper
- Finishing: Gloss/Matt Lamination
- Printing: Offset Printing
- Technology: Silver/Gold/Any Color Foil Stamping, Embossing, Debossing, UV
- Style: Lid And Base Box



More Images



Our Product

Product Description

Custom Logo Kraft Paper Boxes For Packaging Luxury Watch Gift Box Rigid Paper Packaging Box For Watch





Specification

item	value
Industrial Use	Jewelry & Watch & Eyewear, Watch, Other Jewelry & Watch & Eyewear
Printing Handling	Matt Lamination, Varnishing, Stamping, Embossing, Glossy Lamination, UV Coating
Logo	Accept Customized Logo
Material	Kraft Paper
Printing	Offset Printing
Technology	Silver/Gold/Any Color Foil Stamping, Embossing, Debossing, UV
Usage	Packaging Watch
MOQ	1000pcs
Sample time	About 7 Working Days

Lead time

20 Working Days

SUPPORT FOR BOX INTERIOR



Plastic Tray



Paper Card Tray



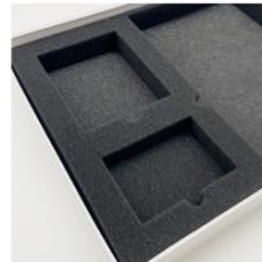
Silk Fabric



EVA



Pillow



Sponge

MATERIAL



Coated Paper



Black Cardboard



Grey Board



Kraft Paper



Fancy Paper



Glitter Paper



Metallic Foil Board



Corrugated Paper

FINISHING



Embossing



Debossing



Gold Foil Stamping



Silver Foil Stamping



Matte Lamination



Gloss Lamination



Spot UV



Texture (100% embossing)

Related Products

□

Contact us

□

Company Information

□

Production Process

□

Packaging & Shipping

□

FAQ

□

Q1: Are You Manufactory or Trade Company?

A: We are the 100% Manufactory specialized in printing & packaging, so we have an advantage in price, quality and delivery date.

Q2: How to ensure product quality?

A: We have a professional quality inspection team to ensure that each shipment is qualified.

Q3: Where Is Your Factory Located? How can I Visit There?

A: We located in Shenzhen, China with very convenient transportation access, We can arrange car pick you up to our company. Warmly welcome you to visit our factory!

Q4: Is the sample charged? How Many Days Will Samples Be Finished? How About The Mass Production?

A: 1. The stock samples are free, the samples produced are charged according to your requirements; The sample fee will be refunded according to the order amount; The samples will be sent within 3-7 days, 2. The lead time for mass production based on your orders quantity, finishing, etc., usually 10~25 working days.

Q5: What is your terms of delivery?

A: We accept EXW, FOB, CFR, CIF, DDU, DDP, etc. You can choose the one which is the most convenient or cost effective for you.

Can't See The Product You're looking for?

Please Contact us , Our Professional Team Will Provide The Best Solution!

□



Shenzhen Linglongrui Packaging Product Co., Ltd.



Linglongrui@fancypackagingboxes.com



fancypackagingboxes.com

Building 9, Wushigang Industrial Zone, Dalang, Longhua, Shenzhen